


CORTE TRANSVERSAL



- 
1. Salas de exposicion
 2. Tienda de recuerdos
 3. Biblioteca
 4. Talleres
 5. Restaurante
 6. Cuarto tecnico:
Unidad condensadora
 7. Cuarto tecnico: Tanques de agua
 8. Cuarto tecnico: Tanques de agua
 9. Foyer
 10. Auditorio

-
- The diagram illustrates a cross-section of a drainage system. It shows a sloped surface on the left that transitions into a vertical wall (15) on the right. The layers from top to bottom are: 1. Substrate, 2. Root barrier, 3. Drainage board, 4. Waterproofing membrane, 5. Mortar leveling slope, 6. Concrete slab, 7. Metaldek composite board, 8. IPE 400mm beam, 9. Steel Warren truss, 10. Water filtration gravel, 11. PVC drainage pipe (Ø.09mm), 12. Drainage board, 13. Waterproofing membrane, 14. Concrete finish, and 15. Concrete retaining wall with buttresses. The diagram also shows a drainage channel with a grate and a pipe leading away from the wall.
1. Sustrato
 2. Barrera antiraices
 3. Lamina de drenaje
 4. Lamina impermeabilizante
 5. Pendiente de mortero de nivelacion
 6. Losa de concreto
 7. Lamina colaborante de metaldek
 8. Vigueta IPE de 400mm
 9. Cercha tipo warren en acero
 10. Grava de filtracion de agua
 11. Tubo de drenaje de pvc Ø.09mm
 12. Lamina de drenaje
 13. Lamina impermeabilizante
 14. Acabado concreto a la vista
 15. Muro de contencion en concreto con contrafuertes

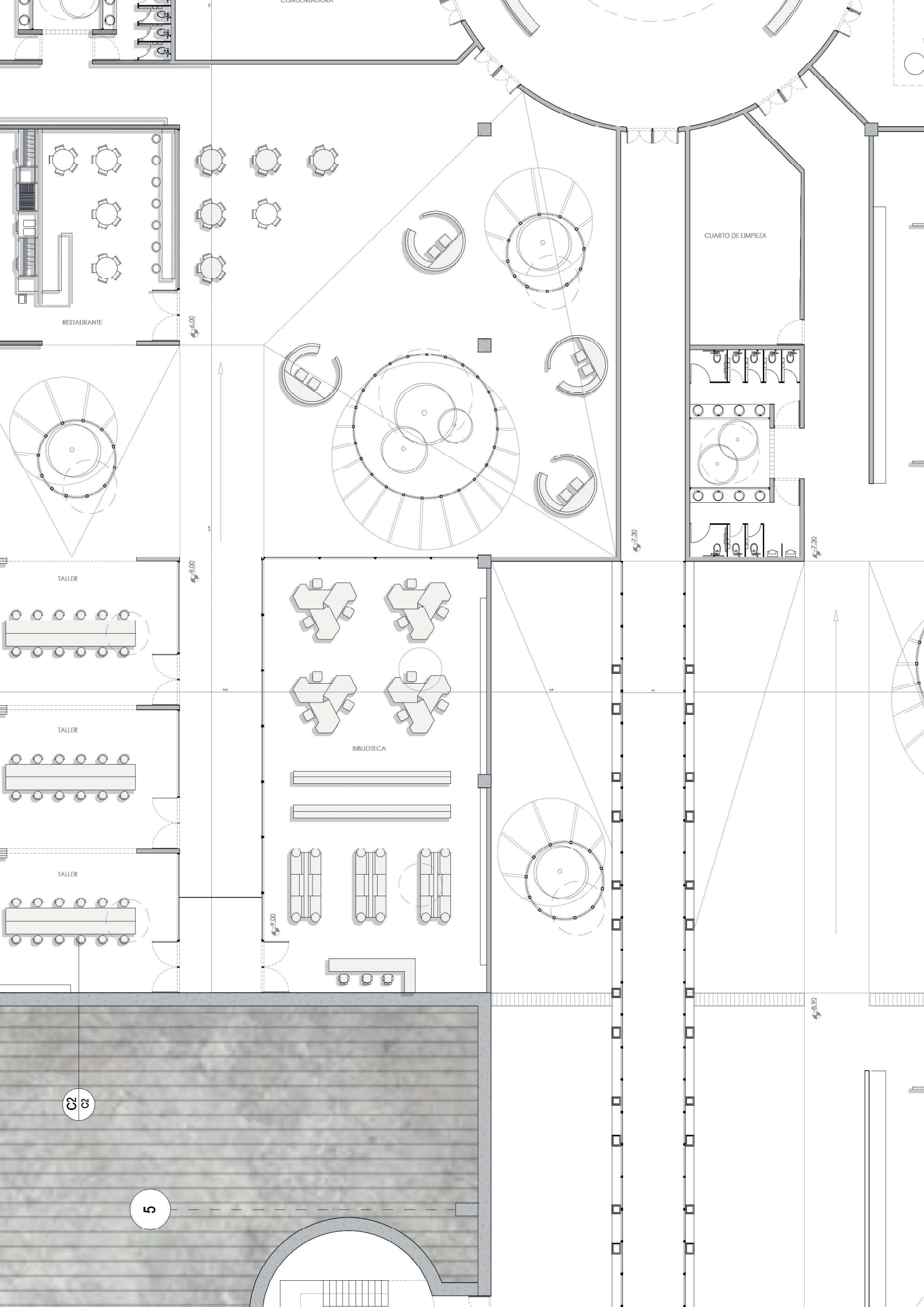
14

7.46

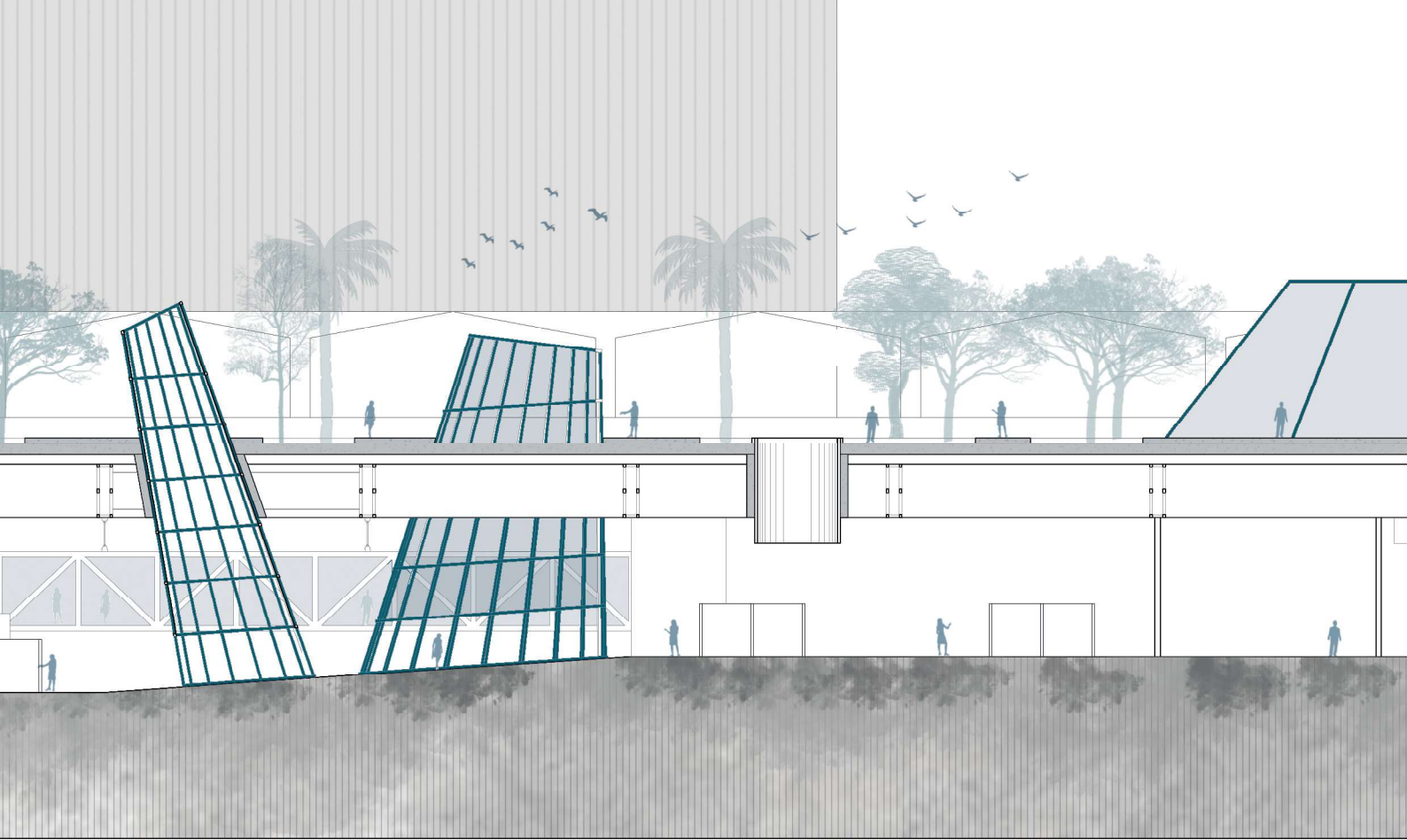
12

13

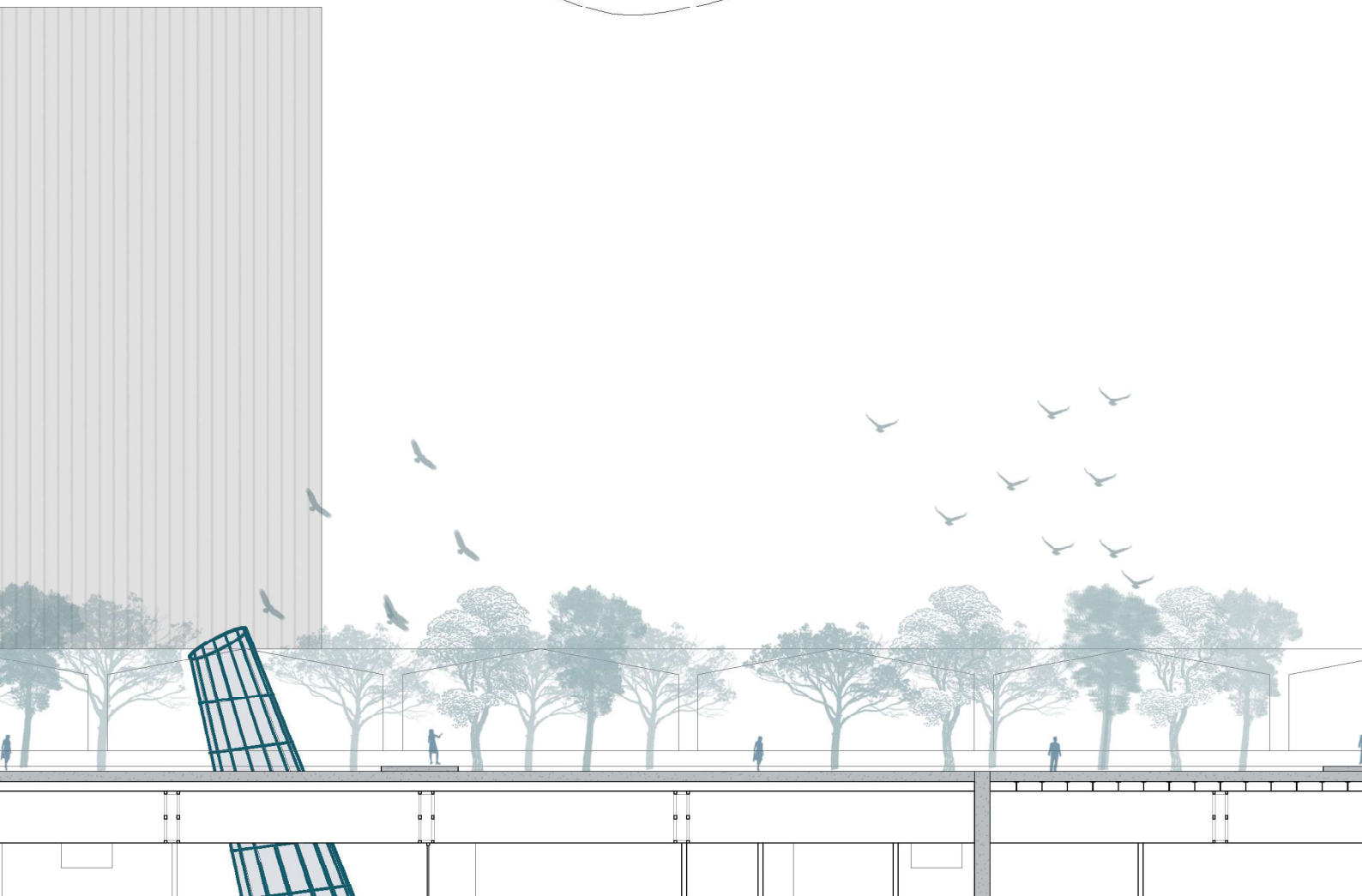
15

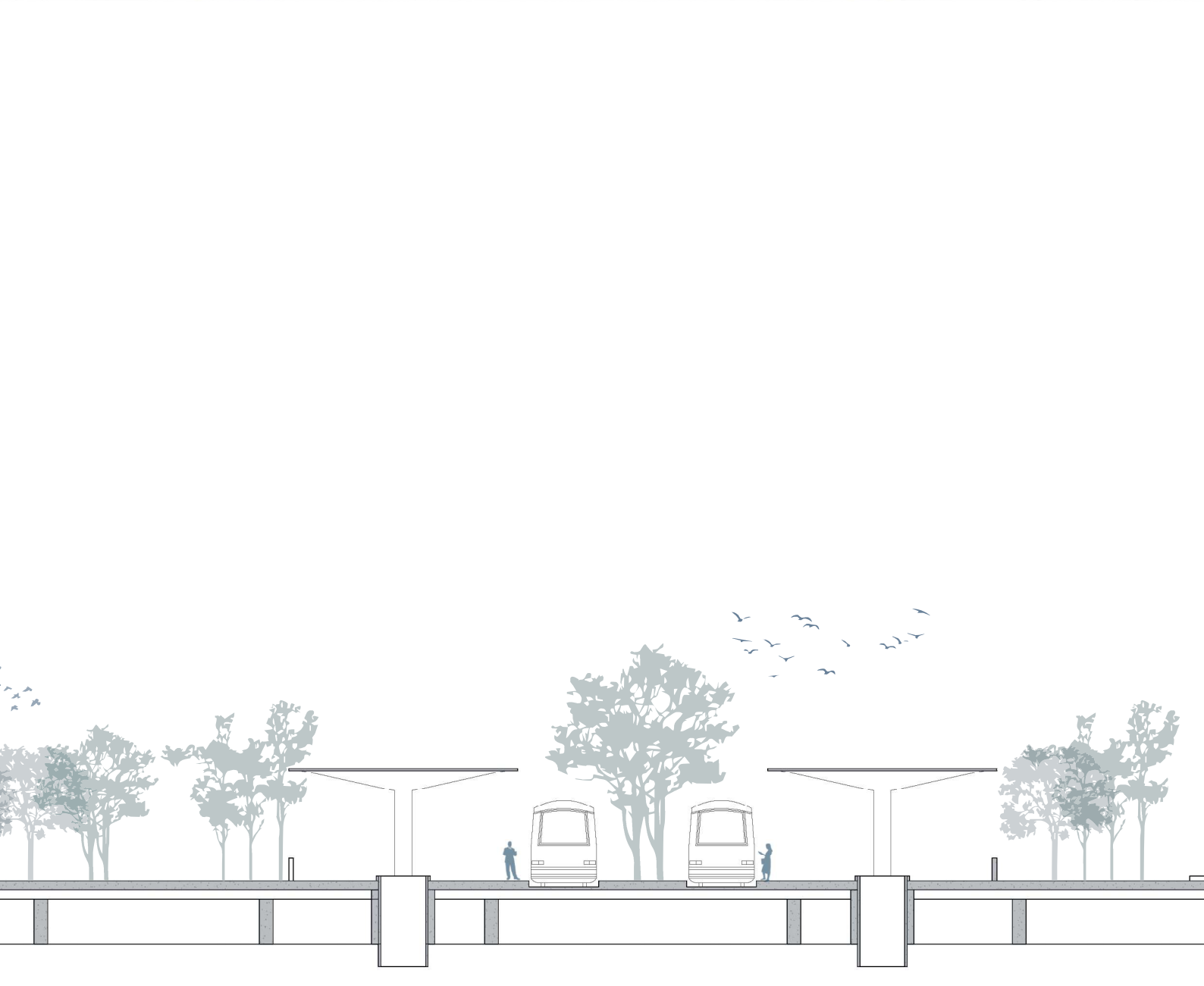
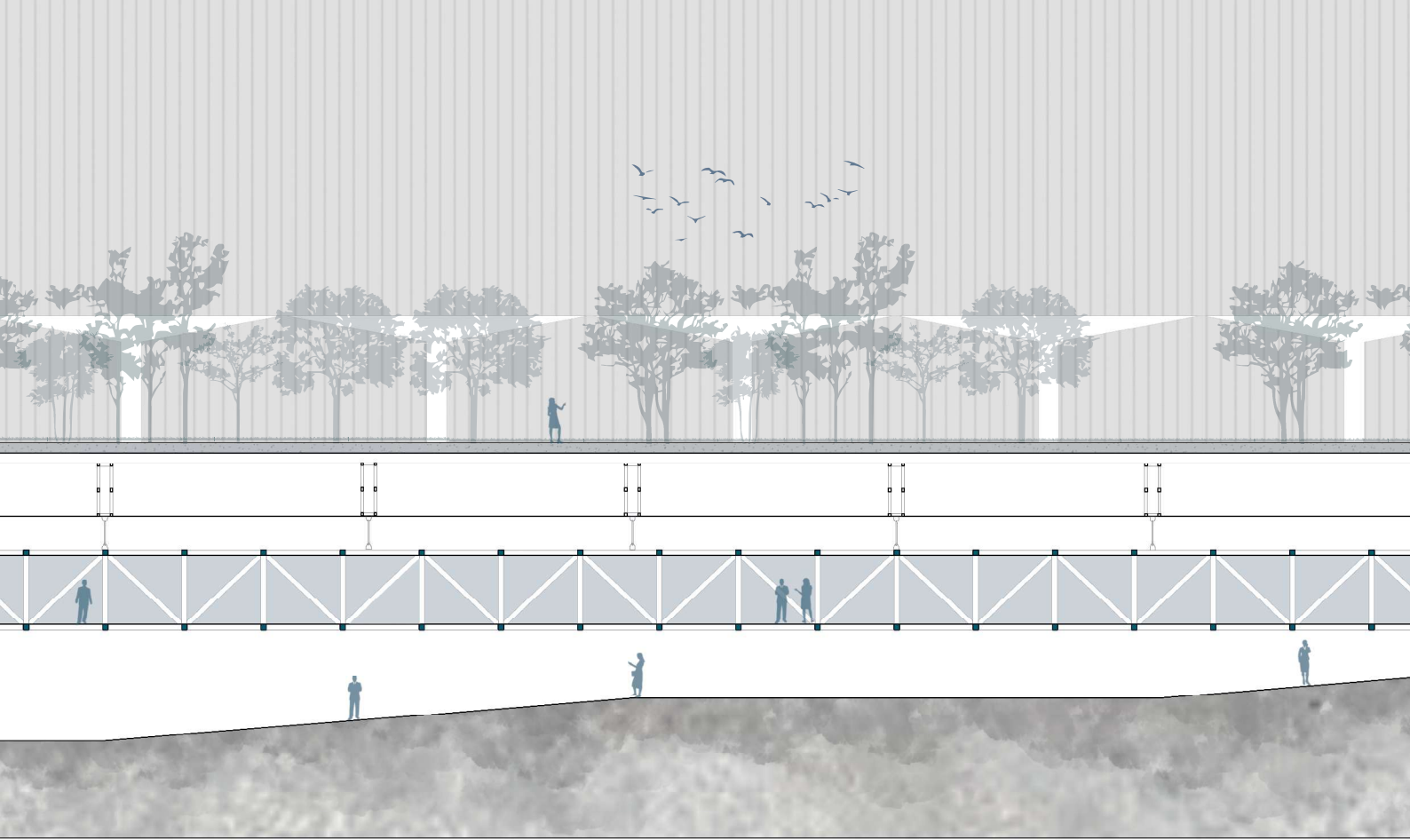






UDINAL C2





-
1. Sustrato
 2. Barrera antiraices
 3. Lamina de drenaje
 4. Lamina impermeabilizante
 5. Pendiente de mortero de nivelacion
 6. Losa de concreto
 7. Lamina colaborante de metaldek
 8. Vigueta IPE de 400mm
 9. Viga IPE de 300mm
 10. Viga IPE de 700mm
 11. Lamina de recubrimiento en acero